

A photograph of a person's hand resting on a wooden plank in a forest. The hand is wearing a dark jacket sleeve. The background is a dense forest with sunlight filtering through the trees.

Welcome to Setra and Pyrocell!

220608



Setra
We create green value



Our vision is to do business in a way
that we and others – our clients, society
and nature – can benefit from.

This is what we call "Grönsamhet".
It comes down to creating green value.

Setra in brief

- We transform forest raw material into climate-friendly products for housing and construction in a global market.
- We sell bioproducts such as bark, chips and sawdust to the paper and pulp industry, and for energy production.
- Since 2021, we also produce bio-oil from sawdust for fuel production, in collaboration with Preem.
- Our timber raw material comes from responsibly managed Swedish forests and is 100% controlled wood, FSC or PEFC.

7 sawmills and
2 processing units
in the Group

Energy in production
96 %
is renewable

We manufacture
1,7 million m³ of wood
products per year, making
us one of Sweden's biggest
wood companies

Owners are Sveaskog
50%, Mellanskog 49,5%,
Other private 0,5%

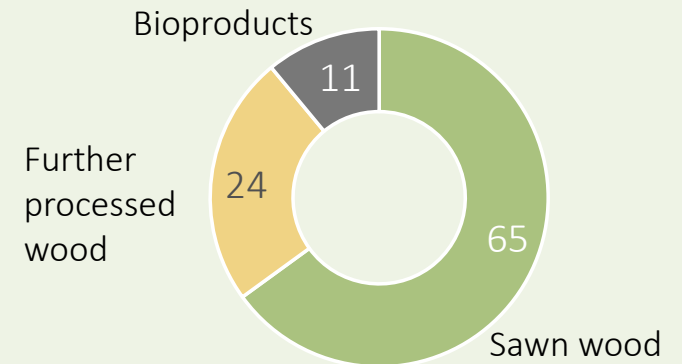
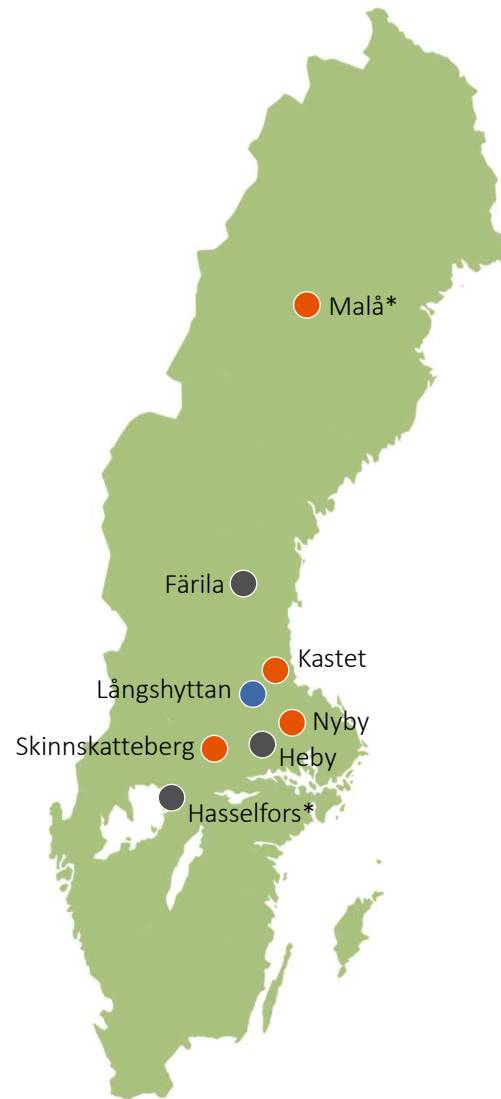
Setra's production units

Pine sawmills

	Production m ³	Employees (31 dec 2021)
Kastet	250,000	58
Malå*	147,000	69
Nyby	202,000	56
Skinnskatteberg	237,000	55

Spruce sawmills

Färila	215,000	68
Hasselfors*	331,000	87
Heby	291,000	85



Processing units

	Production m ³	Employees (31 dec 2021)
Långshyttan CLT, Gluelam, Component	70,000	111
Setra Wood Products UK	21,000	47

* Also planing mills

Setra's value chain

The raw material comes from sustainably managed forests in the local area, ensuring short transport distances. 100 % controlled wood, FSC or PEFC.

The sawmills generate thermal energy using their own bioproducts.

Setra creates jobs in rural areas.

We invest in rail transport and work to find smart logistical solutions.

For CLT customers, Setra takes care of the whole chain, from planning and manufacture to delivery.

Wooden buildings store carbon dioxide.

Bioproducts from our sawmills are turned into paper, pulp or renewable energy and fuel.

Pyrocell manufactures bio-oil from sawdust to produce fossil-free fuel.

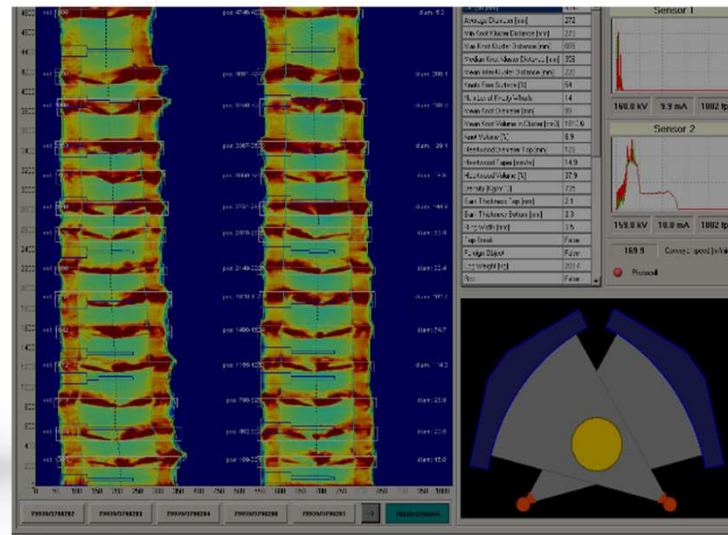
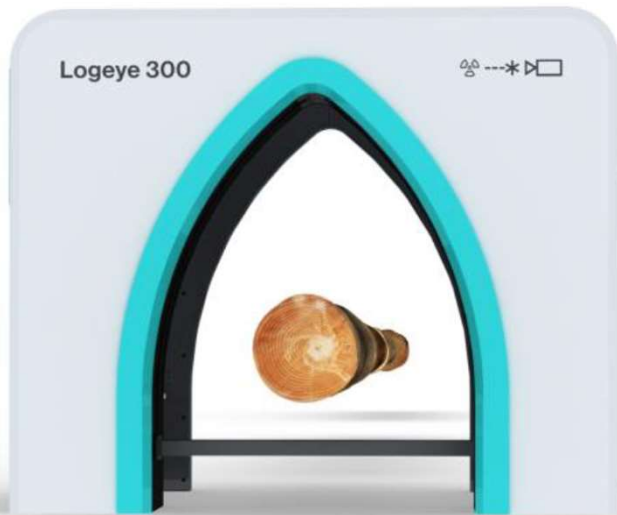
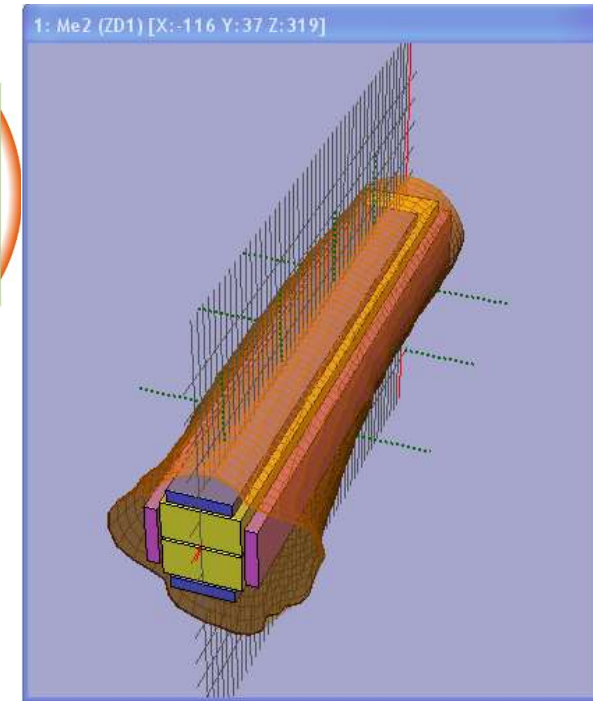
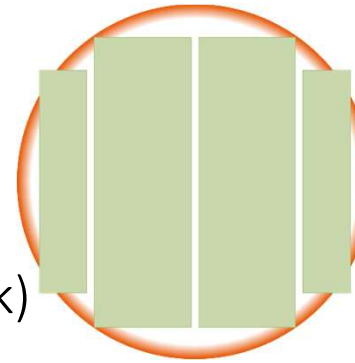
People living in wooden homes feel better.



100% of the log = products

Log x-ray for optimum use

- 52 % sawn wood (calc from m3 raw solid under bark)
- 26 % cellulose chips (wet and dry)
- 17 % sawdust

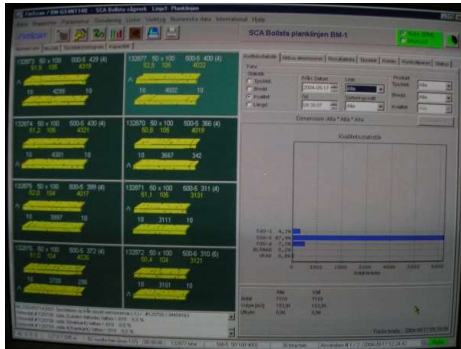


Log x-ray on every log, to use the right log for the right purpose

Every piece is unique!

Advanced image processing to optimize value

- Several cameras scan all 4 sides, the full length
- Grading towards purpose from knot type, defects and wane



Setra Kastet sawmill and Pyrocell



Visit Sawmill and Pyrocell

- Your guides today:
 - Pontus Friberg, chairman Pyrocell
 - Anders Wigstein, production manager Pyrocell
 - Charlotte Siljeholm, sitemanager Setra Kastet sawmill
 - Lovisa Krebs, press contact Setra and Pyrocell
- For safety reason we have to maximize group size to 20 persons => 2 groups
- Priority to participants in the Forest Academy 2022

Setra and Pyrocell

Safety instructions in the industrial area

- Wear high warning/visibility vest – all the time
- Watch out for timber trucks and forklifts
- Walk along marked walkway only
- Do not deviate from your group – group leader
- Wear vest, glasses , helmet & ear/noise protection (Pyrocell plant)
- Smoking is not allowed
- Photography is not allowed
- Media contact Lovisa Krebs

- In case of emergency – meeting/gathering place 
- Your position 



Setra's value chain

The raw material comes from sustainably managed forests in the local area, ensuring short transport distances. 100 % controlled wood, FSC or PEFC.

The sawmills generate thermal energy using their own bioproducts.

Setra creates jobs in rural areas.

We invest in rail transport and work to find smart logistical solutions.

For CLT customers, Setra takes care of the whole chain, from planning and manufacture to delivery.

Wooden buildings store carbon dioxide.

Bioproducts from our sawmills are turned into paper, pulp or renewable energy and fuel.

Pyrocell manufactures bio-oil from sawdust to produce fossil-free fuel.

People living in wooden homes feel better.



Pyrocell – bio-oil from sawdust

- Setra and Preem are building a new value chain for renewable fuel, from forest to tank.
- In 2021, Pyrocell started producing pyrolysis oil from sawdust at the sawmill in Kastet. The pyrolysis oil is used as fossil-free raw material in the production of fuel at Preem's refinery in Lysekil.
- The pyrolysis oil replaces fossil oil in fuels such as petrol and diesel, bringing a carbon dioxide saving of 80-90 % compared with fossil fuel.

17,000

The number of cars our future production of bio-oil could help to power each year.

Setra's product portfolio – for global wood building

CLT – capacity of approx 90 000 m³ at full production,
Sweden/Norway. Future UK and north Europe



2x4 – Various products, US 2x4, Australian MPG,
European C24/C30. Yearly volume 250 000 m³ (Hasselfors)



Gluelam – Post & Beams. Total capacity 55 000 m³.
20-25 % Japanese P&B. Sweden/Norway 30 000 m³



Indirect products – Approx 120 000 m³ sawn lamina
Japanese P&B, Gluelam rawmaterial Europe 220 000 m³

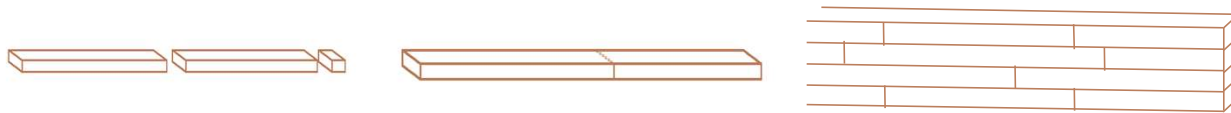


Production process principe

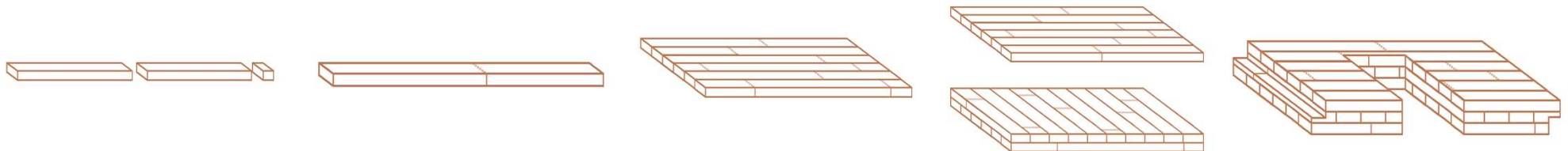
Components



Glulam



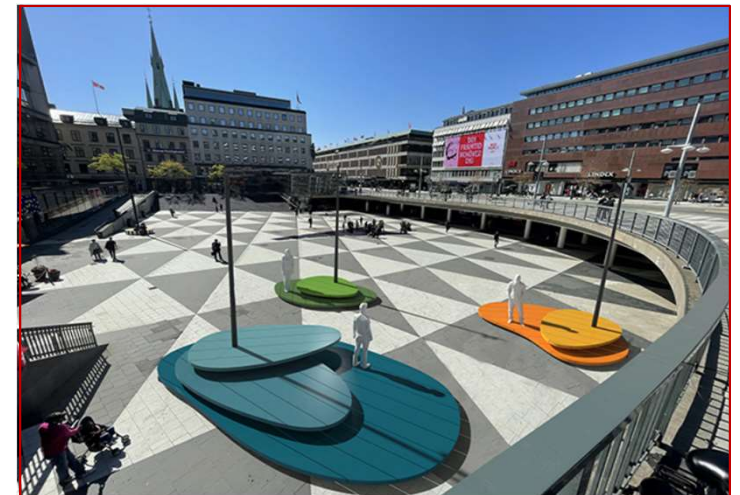
CLT – Cross Laminated Timber



Swedens first FSC certified building with CLT from Setra
The view tower in Siljansnäs, Dalarna



We need to grow our cities... – in the forest!



**Non-fossil fuel from sawdust
=> Pyrolysis oil**



Setra's value chain

The raw material comes from sustainably managed forests in the local area, ensuring short transport distances. 100 % controlled wood, FSC or PEFC.

The sawmills generate thermal energy using their own bioproducts.

Setra creates jobs in rural areas.

We invest in rail transport and work to find smart logistical solutions.

For CLT customers, Setra takes care of the whole chain, from planning and manufacture to delivery.

Wooden buildings store carbon dioxide.

Bioproducts from our sawmills are turned into paper, pulp or renewable energy and fuel.

Pyrocell manufactures bio-oil from sawdust to produce fossil-free fuel.

People living in wooden homes feel better.



Thank you
for
visiting
us!

