



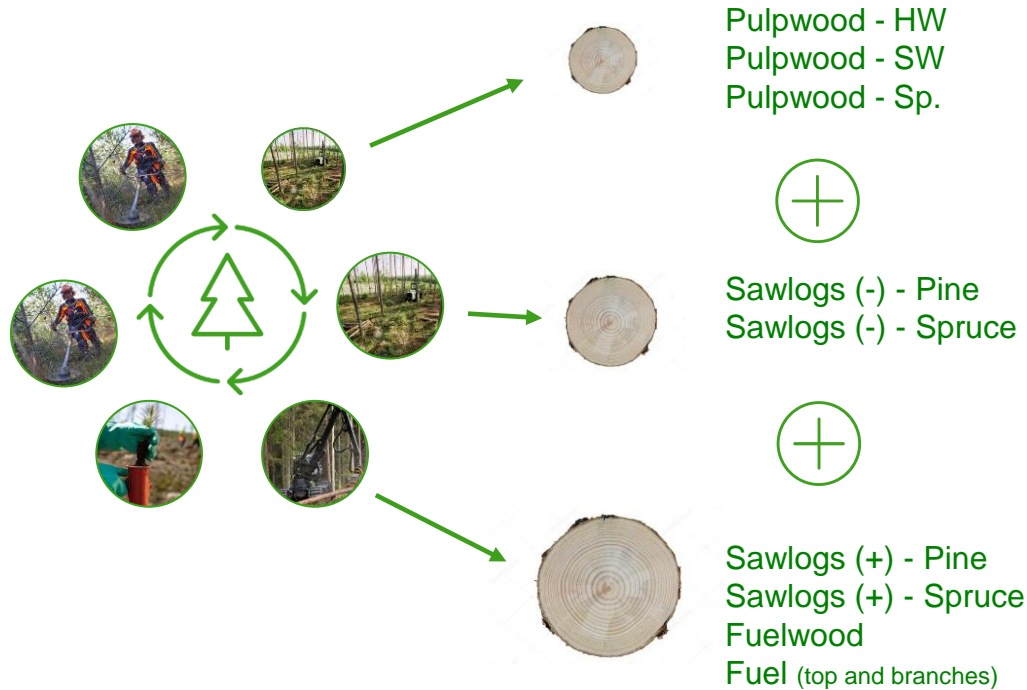
BillerudKorsnäs Wood Supply

From trunk to crown
– we use the whole tree

Per Funkquist

– Director Sustainability and Communication – Wood
Supply

From trunk to crown – we use the whole tree



- About **70%** of the forest area in Sweden is used for production
- The Forest management model aim to: **Produce Sawlogs** and Secure **high longterm growth**.
- Pulpwood and fuel wood are considered as **very valuable by-products** from the forest management model.
- Almost **30% of the forest area** is formally or voluntary **protected**, low productive forests, or general **nature consideration** were **no harvest** take place

About 25 -30 % of the forests in Sweden is exempted from forestry – important for Biodiversity



9 % Formally protected area



11 % Non-productive forests



5-10 % voluntarily set asides



5-10 % Protection zones and general consideration

From trunk to crown – we use the whole tree

Watch movie ▶



The **substitution effect** means that you replace products from finite resources, such as plastic and aluminum, with products from renewable sources, such as paper.

Four positive effects of active forestry.

1

Growing forest binds CO₂.

2

Wooden houses and wooden constructions bind CO₂.

3

Paper can replace plastic and aluminium as packaging materials.

4

The rest of the tree becomes bioenergy.

40%

becomes bioenergy that replace fossil fuels.

30%

becomes raw material for paper and board.

30%

becomes timber for houses and furniture.

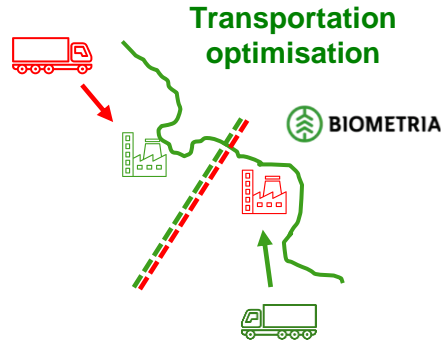


From trunk to crown – we use the whole tree

Pulpwood - HW
Pulpwood - SW
Pulpwood - Sp.

Sawlogs (-) - Pine
Sawlogs (-) - Spruce

Sawlogs (+) - Pine
Sawlogs (+) - Spruce
Fuelwood
Fuel (top and branches)



Trade of assortments
Sawlogs for **pulpwood**
(Maximum utilization of each tree)

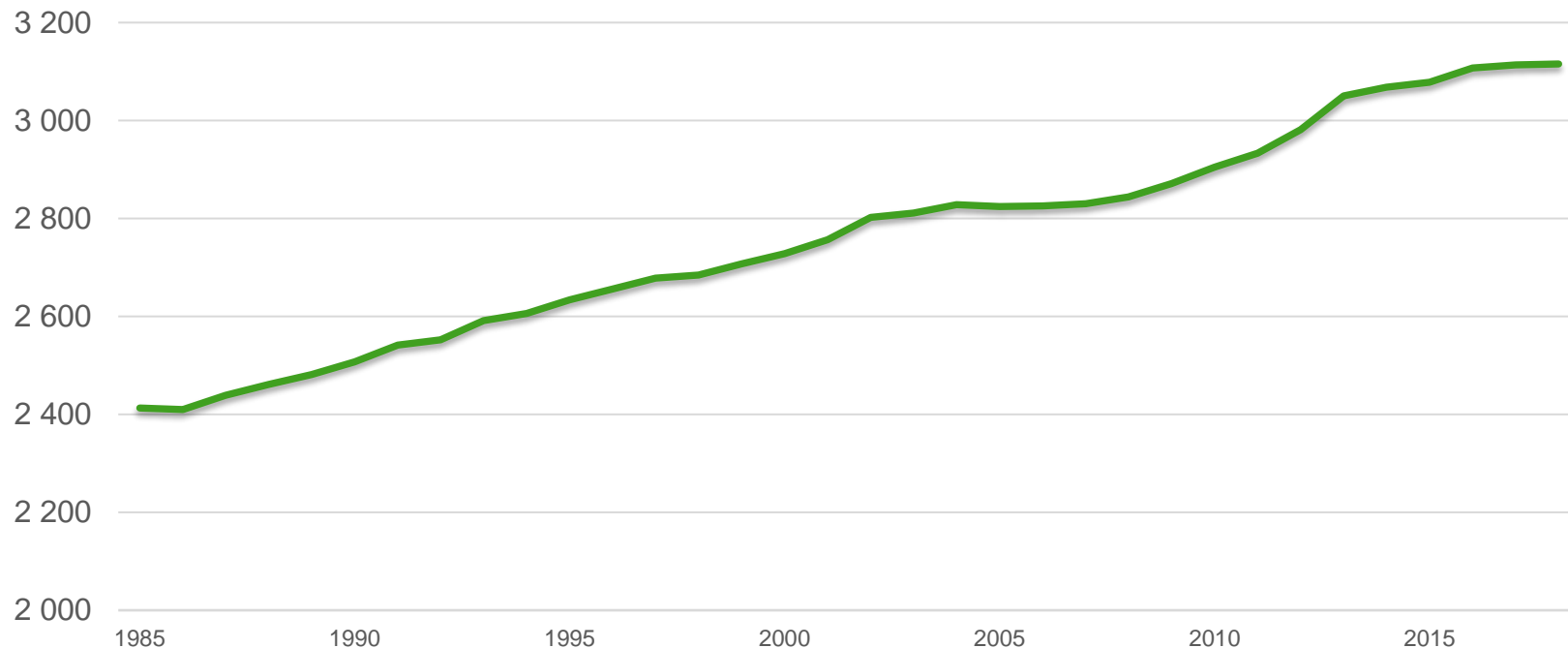


50% planks and boards
35% **wood chips (pulp)**
15% sawdust (energy)



Responsible forestry always start with Zero deforestation*

The standing stock in Swedish forests constantly increases (M m³solid)



* when areas are transformed from forests to other landuse after harvest

Source: Swedish National Forest Inventory & Swedish Forest Agency 2021
(Average standing stock during a five-year period. 2018 = average between 2016-2020)

Competitive and Sustainable Wood Supply



- BillerudKorsnäs use raw material only from sustainable forestry.
 - BillerudKorsnäs only source wood from regions without deforestation and all the sourcing regions have growing stock of wood.
 - BillerudKorsnäs promote forest certification and source from certified suppliers.
 - For other non-certified supply there are routines and mitigating measures in place to avoid any controversial sources.
 - We help small holders to get certified and offer group certification for both FSC and PEFC.



- Resource efficiency is crucial in all part of the value chain and all of the raw material from the forest is utilized in the absolute best way. We use the whole tree !



Thank you !

